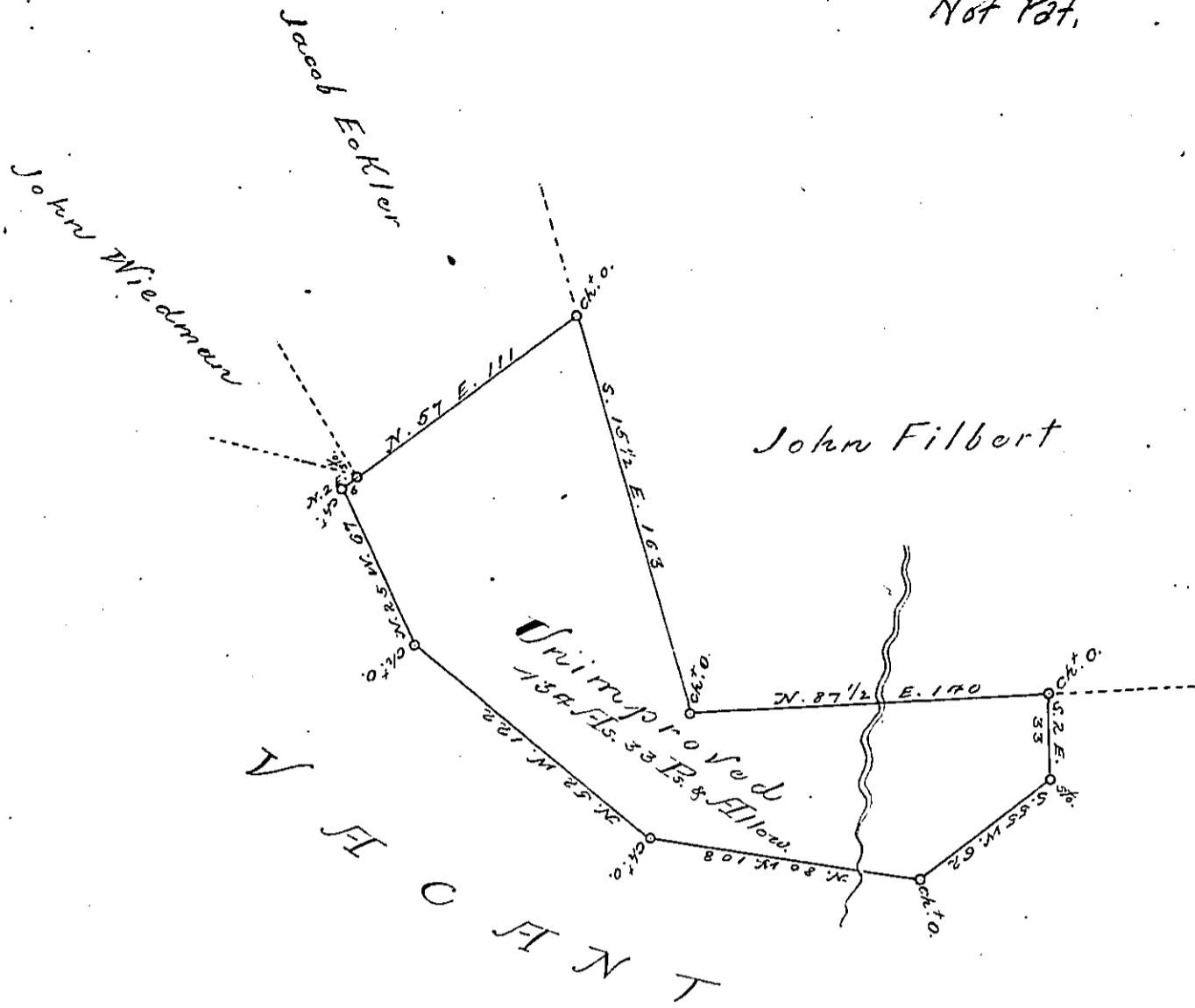


Not Pat.



Situate in Pine Grove township Schuylkill County
 containing one hundred and thirty four Acres and thirty
 three perches and the allowance of six per cent.

Surveyed the 13th day of August 1830 in pursuance
 of a Warrant dated the 31st day of July 1829 Granted
 to Henry Eckler.

To Jacob Spangler Esquire
 Surveyor General of Penna.

J W Jackson S.S.

IN TESTIMONY that the above is a copy of the original remaining on file in the
 Department of Internal Affairs of Pennsylvania, made con-
 formably to an Act of Assembly approved the 16th day of
 February, 1833, I have hereunto set my Hand and caused
 the Seal of said Department to be affixed at Harrisburg, this

— ninth — day of September 1892

Thos J. Stewart
 Secretary of Internal Affairs